



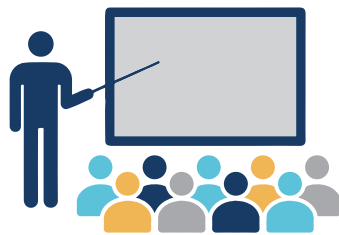
ENHANCING CAPACITY OF Louisiana's Small Farms & Businesses

CERTIFICATION PROGRAMS

The Enhancing Capacity of Louisiana's Small Farms and Businesses is an Agricultural Education Technical Assistance certification training program offered by the Southern University Agricultural Research and Extension Center. The program is free of charge to Louisiana residents. We provide face-to-face and virtual science-based training and education to individuals, small businesses, and communities through the Master Small Ruminant, Food Safety Modernization, Sustainable Agriculture, or Small Business Development Training Programs.



18 TEAM MEMBERS



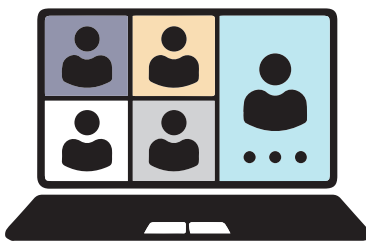
EDUCATED OVER 2,500 PARTICIPANTS



SERVED 35 PARISHES



CONDUCTED 17 ONSITE SESSIONS



CONDUCTED 24 VIRTUAL SESSIONS



24 VIRTUAL GRADUATIONS



17 ONSITE GRADUATIONS



4 PROGRAM LEADERS



14 PROGRAM TRAINERS



20 TRAINING TOPICS



DEVELOPED 20 HANDOUTS AND DISTRIBUTED OVER 5,000



FILMED 10 VIDEOS



2,500 FACEBOOK VIEWS



2,500 LOW AND MODERATE INCOME FORMS



1,000 VIRTUAL REGISTERS

Enhancing Capacity of Louisiana's Small Farms and Businesses has four certification programs:





Food & Farm Food Safety Certification





Small Business Development Certification





Master Small Ruminant Certification





Sustainable Urban Agriculture Certification

CERTIFIED 2,500 PARTICIPANTS IN 35 PARISHES:

1. Avoyelles
2. Beauregard
3. Bossier
4. Caddo
5. Calcasieu
6. Cameron
7. Catahoula
8. De Soto
9. East Baton Rouge
10. East Carroll
11. East Feliciana
12. Iberia
13. Iberville
14. Jefferson
15. Lafayette
16. Livingston
17. Madison
18. Morehouse
19. Natchitoches
20. Orleans
21. Rapides
22. Richland
23. St. Helena
24. St. Bernard
25. St. Landry
26. St. James
27. St. John the Baptist
28. St. Martin
29. St. Mary
30. St. Tammany
31. Tangipahoa
32. West Baton Rouge
33. West Carroll
34. Washington
35. Winn



HELD 7 VIRTUAL TRAININGS AND GRADUATIONS BETWEEN AUGUST 2020 - AUGUST 2021



The Mobile Unit travels across the state of Louisiana to conduct face-to-face trainings and graduations.



COMPUTER LAB



8 ONSITE WORKSTATIONS



HANDICAPPED ACCESSIBILITY



INSTRUCTOR STATIONS



3 LARGE TV MONITORS
(Used for teaching)



SATELLITE STATION
(Wireless Network & Internet Access)



DEMONSTRATION KITCHEN



COLD & HOT WATER



SAMPLE VIEWING WORKSTATION



WHEEL CHAIR LIFT



ONSITE LAPTOPS



LINKING CITIZENS of Louisiana with OPPORTUNITIES for Success!

[f](#) [t](#) [i](#) @suagcertify ••• CONNECT WITH US ••• www.suagcertify.com

Southern University Agricultural Research and Extension Center and the College of Agricultural, Family and Consumer Sciences is an entity of Southern University System, Orlando F. McMeans, Chancellor-Dean, Ray L. Belton, System President, Dominoe D. Rutledge, Esq., Chairman, Board of Supervisors. It is issued in furtherance of the Cooperative Extension Work Act of December 1971, in cooperation with the U. S. Department of Agriculture. All educational programs conducted by the Southern University Agricultural Research and Extension Center and the College of Agricultural, Family and Consumer Sciences are provided to people of all ages regardless of race, national origin, or disability. ©2021 Produced by the Southern University Ag Center's Cooperative Extension



WWW.SUAGCENTER.COM