

LINKING CITIZENS of Louisiana with OPPORTUNITIES for Success!



COOPERATIVE PROGRAM

Agriculture & Natural Resources

Delivering the Southern University Cooperative Extension's Agricultural and Natural Resources (ANR) mission to small scale producers is an evolving undertaking. ANR, in collaboration with governmental and non-profit organizations, prepare traditionally unserved and underserved, ranchers, women, veterans and small farmers to produce and compete in a changing agricultural industry.

The ANR specialists, agents, staff and advisors are committed to linking farmers to opportunities, providing trusted information and assessing community needs. We work together to play a role in building communities and leading the fight to address statewide challenges.

The goal of the ANR program is to deliver valuable instructional programs to Louisiana producers. These programs allow farmers to maintain sustainable businesses, profitable farms and improved livelihoods. The ANR program consists of:

- The Annual Livestock Show
- The Louisiana Small Farmer Agricultural Leadership Institute
- The Small Farm Outreach Program
- The Sustainable Urban Agricultural Certification Course
- The Sustainable Urban Demonstration Farm
- The Wisteria Alliance – Women in Agriculture
- CLIMATE (Cultivating Leadership Innovative Motivation through Agriculture Talent and Education)

These programs reach citizens throughout the 64 parishes of Louisiana.

Agriculture and Natural Resources' responsibility to agriculture makes a difference in the lives of all Louisianians.



LINKING CITIZENS of Louisiana with OPPORTUNITIES for Success!

The Cooperative Extension Program improves the lives and livelihood of Louisianian's through delivering research-based, evidence-based, information in a manner that is easily understood. As the outreach arm of the Southern University System, we pride ourselves on being responsive, aware, committed, non-judgmental and ready to serve.

We are active members of your communities and we listen to your needs and concerns. As a result, we endeavor to build lasting partnerships and strive to provide relevant and timely programs and experiences targeting low resource audiences.

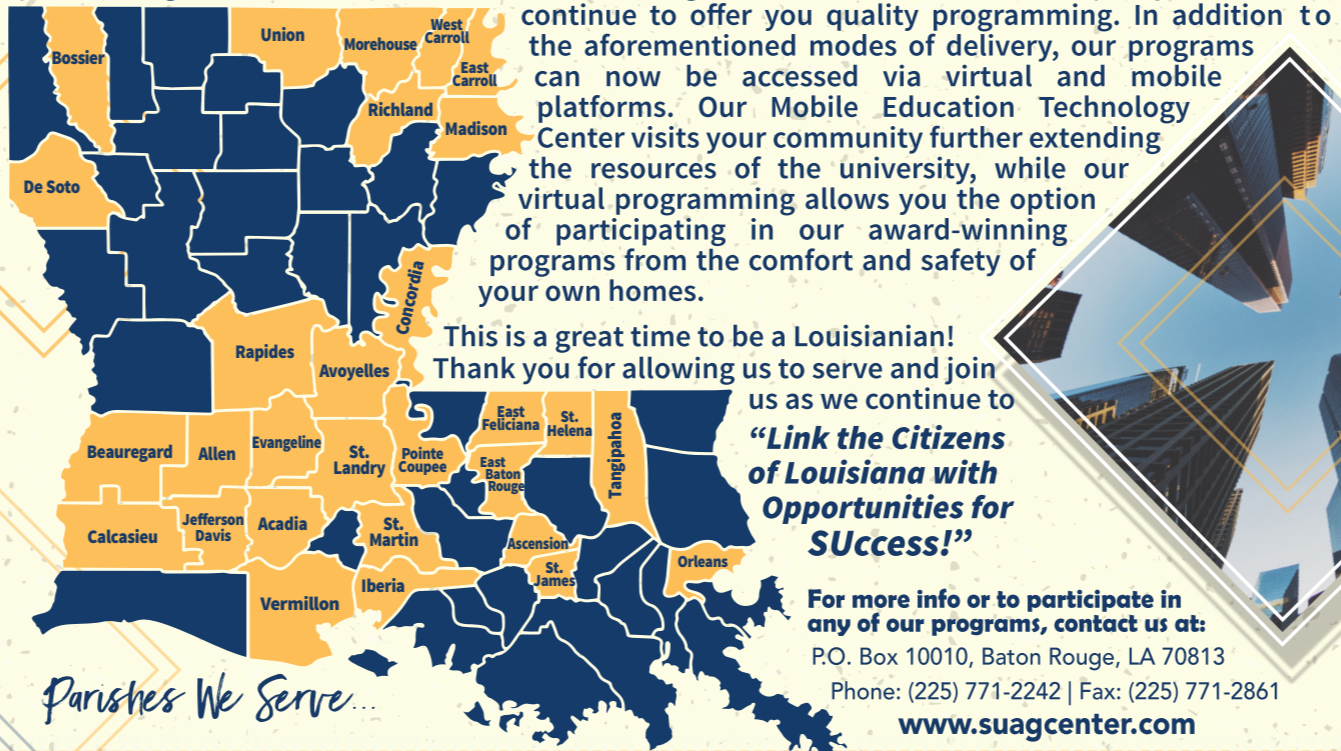
Our agents, extension educators and state specialists develop their programs with your needs in mind! We deliver quality instruction through various mediums, while fostering a direct connection between the community and the university.

Our Extension professionals host and participate in workshops, conferences, meetings, demonstrations, one on one visits, field days and other educational programs in communities across the state. These initiatives target farmers, youth, seniors, families and small businesses.

Ever changing health and environmental factors have altered the way we all live and learn. However, your SU Ag Center's Cooperative Extension Program has made the necessary adjustments to

continue to offer you quality programming. In addition to the aforementioned modes of delivery, our programs can now be accessed via virtual and mobile platforms. Our Mobile Education Technology Center visits your community further extending the resources of the university, while our virtual programming allows you the option of participating in our award-winning programs from the comfort and safety of your own homes.

This is a great time to be a Louisianian! Thank you for allowing us to serve and join us as we continue to **"Link the Citizens of Louisiana with Opportunities for Success!"**



Parishes We Serve...

For more info or to participate in any of our programs, contact us at:
 P.O. Box 10010, Baton Rouge, LA 70813
 Phone: (225) 771-2242 | Fax: (225) 771-2861
www.suagcenter.com

Community & Economic Development

The Southern University Ag Center continues to develop ways to improve equality, meet basic needs, enhance resources and promote economic growth through its Community and Economic Development Program (CED).

The Community and Economic Development Program offers a plethora of opportunities for local municipalities and governments. For example, CED teaches local leaders to leverage public capital with public and private resources, provides comprehensive approaches to fighting poverty and highlights opportunities for creating capital via our collaborative partners. Moreover, our CED initiatives provide local communities with the information needed to empower them to shape their own economic futures.

The overarching goal of CED is to assist local leaders and their residents by empowering them with the resources and tools to enjoy healthy robust communities and create a sense of empowerment and economic stability. Our conference, Learning Everyday About Development (L.E.A.D.), serves as one of the vehicles in which the CED program brings these and other opportunities to cities throughout the state. The conference equips mayors, police juries, city council members and other community decision-makers with the tools to help their communities reach its potential, while unlocking previously untapped resources.

Evidence has proven that our CED program is vital to the growth of communities and will continue to help these communities prosper.



Center EXTENSION PROGRAM



Southern University Agricultural Research and Extension Center and the College of Agricultural, Family and Consumer Sciences is an entity of Southern University System, Orlando F. McMeans, Chancellor-Dean, Ray L. Belton, System President, Domoine D. Rutledge, Esq., Chairman, Board of Supervisors. It is issued in furtherance of the Cooperative Extension Work Act of December 1971, in cooperation with the U. S. Department of Agriculture. All educational programs conducted by the Southern University Agricultural Research and Extension Center and the College of Agricultural, Family and Consumer Sciences are provided to people of all ages regardless of race, national origin, or disability. © 2020 SU Ag Center | Layout & Graphics by Allison Ezidore-Tassin

Family & Human Development

The Family and Human Development (FHD) Unit works as a catalyst to provide Louisiana families with the knowledge to identify problems and resources through classes – helping them to improve their quality of life.

Families are experiencing societal changes economically, socially, and physiologically, at the national and local levels, that affect the family's function... the growth and development of children and the aging process. FHD recognizes that a lack of knowledge and skills prevent individuals from improving their family life. Skills that allow them to nurture the growth and development of children within their homes and communities are often missing. A transformation of change among families and other individuals play an important role in shaping our health, attitude, and behaviors.

The FHD unit's mission is to move families to a level of independence by teaching them how to develop relationships, maintain healthy lifestyles, and build family strengths. Family health is currently the focal point of our outreach to improve upon the day-to-day living and the health of families, because a family provides its members with key resources for healthful living, including food, clothing, shelter, a sense of self-worth, and access to medical care.

The FHD unit also provides parenting and self-sufficiency classes in parishes across the state of Louisiana inclusive of:

- Family Health
- Parents Preparing for Success
- Family Finance
- Child Care Training
- Emergency Preparedness



Sustainable Agriculture

The mission of land-grant institutions involves a three-fold process: research, teaching, and extension. The hands-on focus of outreach or extension are, to this day, key elements of the land-grant vision. Extension was designed to link the land-grant's academic and research programs to societal needs—with agricultural advancements as one of the major topics. The Southern University Agricultural Research and Extension Center has a mission to link Louisiana citizens to opportunities for success. Our Sustainable Agriculture programming supports agricultural education and societal engagement in food production as well as linking socioeconomic and health systems. Innovative programs, such as the Sustainable Urban AG Summit and Sustainable Community Agricultural Learning Environments (S.C.A.L.E.), work throughout the Ag Center's statewide outreach to increase consumer knowledge in terms of where and how food is produced and the importance of agriculture technology in regard to providing multiple food production and community developments.

The goal of the Sustainable Agriculture program is to continue contributing cutting edge programming that educates consumers on nutrient recycling and biodiversity conservation, green infrastructure development and maintenance, utilization of agroecological principles, development of sustainable livestock production, and the benefits of crop diversity practices. Our sustainable agriculture programs continue to bridge the gap between urban and rural communities by engaging adults and youth in educational programs that teach sustainable farming, local agriculture practices, and food security to increase the health of our future food systems.



Enhancing Capacity, Louisiana Small Farms & Businesses

The Enhancing Capacity Certification Programs offer and provide technical assistance certifications that places emphasis on four curriculums. These programs are designed to focus on practical learning by providing opportunities for participants to combine both theory and practice.

Food and Farm Safety Certification: This course introduces biological, chemical, and physical hazards and explains federal guidelines for cleaning and sanitizing food areas, contact surfaces, utensils and farm facilities.

Small Business Development Certification: Participants will earn a certificate after receiving initial counseling, attending classes, completing all required legal document action, and passing an on-site visit.

Sustainable Urban Agriculture Certification: In this program, participants will become familiar with techniques and strategies necessary for growing fresh fruits, vegetables and animals in an urban environment sustainably.

Master Small Ruminant Certification: The producer will be awarded a certificate of completion after successfully completing five hours of training on the following topics on small ruminants: Nutrition, Reproduction, Management and Production, Housing and Facilities, Pasture-based Production and Breeds, and Breeding.

These courses are science-based, focuses on current philosophy, and provide the experiences and skills needed to enter the workforce beyond entry-level positions.



The Mobile Educational Technology Unit operates as both a high-tech educational classroom and a mobile extension of our brick and mortar facilities serving the citizens of Louisiana. This unit consists of a state-of-the art computer lab, kitchen, wireless internet, video monitors and satellite dish that supports training for all certification programs and research.

Over the years, the "Enhancing Capacity of Louisiana Small Farms and Businesses" has trained and certified 2,000 citizens, covering over 20 parishes across the state of Louisiana.

Nutrition, Health & Wellness

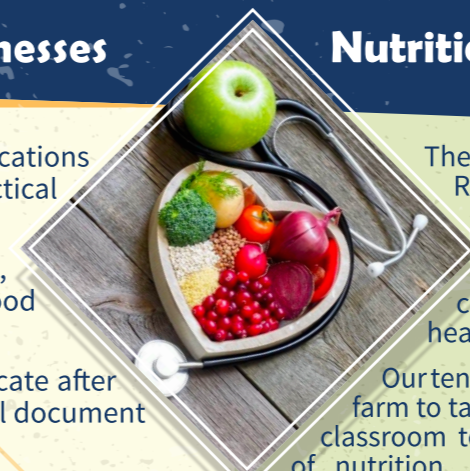
The Southern University Agricultural Research & Extension Center has a mission to link Louisiana citizens to opportunities for success by encouraging progressive lifestyle changes as it relates to nutrition, health and wellness.

Our tentacles have a far-reaching arch. From farm to table, gardening to grocery shopping, classroom to constituents – we offer a variety of nutrition, health and wellness educational experiences. Our signature programs are:

- The Expanded Food and Nutrition Education Program (EFNEP)
- Supplemental Nutrition Assistance Program – Education (SNAP-Ed)
- Growing Healthy Gardening Program
- Communities of Color Network
- Creating Healthy and Enjoyable Foods Youth Camp (C.H.E.F Camp)
- Sister's Together: Move More, Eat Better

These programs reach over 23,000 youth, adults, and seniors annually. The goal of our nutrition, health and wellness programming is to expand our outreach with culturally effective messages that are evidenced-based, relevant, and beneficial to our constituents, virtually and/or face-to-face. Our nutrition programs provide research-based initiatives that coincide with the USDA Dietary Guidelines and MyPlate Food Guidance System. As such, our Communities of Color Network (COC) serves as the infrastructure for building capacity, coordinating, organizing and implementing tobacco prevention and cessation programs and activities for adults and youth. The COC staff engages within communities of color, educating and empowering individuals to respond to the information provided to create healthier communities.

Throughout the year, our programs/activities are developed to reflect the needs of our communities in an innovative manner indigenous to the communities we serve.



4-H Youth Development



As the cycle of life continues with emerging issues across our state, it is imperative to ensure today's youth are equipped with the basic developmental, social and organizational skills needed to become futuristic leaders. Through 4-H and Positive Youth Development programs, youth gain the knowledge and skills to ignite their passion for civic engagement, community stewardship, and decision-making processes.

Youth Development's mission is to provide life-changing skills and opportunities to Louisiana youth with an overarching vision to enhance their lives by providing positive development in a safe and nurturing environment. While our services are extended to all youth, there is a particular focus on socially disadvantaged communities and vulnerable groups, as there is generally limited access to viable resources.

In keeping with the Southern University Agricultural Research and Extension Center's mission to connect citizens across the state with the essential tools necessary to encourage individual and collective success, our programs currently serve youth throughout the state of Louisiana. Innovative, pedagogical strategies are provided to diverse audiences in healthy living, college and career readiness, juvenile justice delinquency intervention and prevention, development of school gardens using cost-efficient methods in food deserts, 4-H, and incisive, empirical positive youth development. Moreover, over 50 young adults across Louisiana have been trained and currently serve as Ambassadors for Healthy Living. These ambassadors assist with leading program initiatives and encourage younger youth to make healthier, holistic behavioral changes. Inclusive of interdepartmental and collaborative efforts, we aim to eliminate barriers so youth across Louisiana will realize Healthy Options that Promote Excellence (HOPE)!

